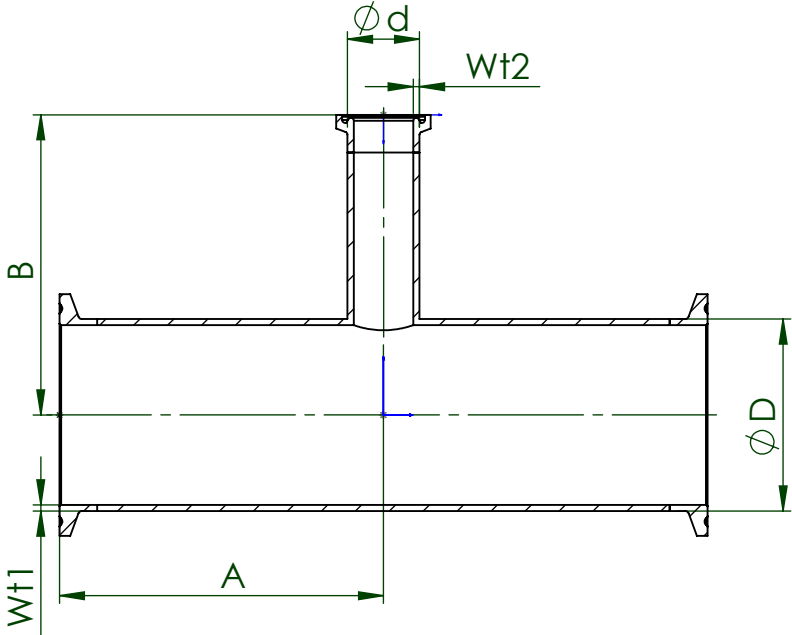


CODE	SIZE	A		B		D		d		Wt1		Wt2	
		[mm]	[inch]	[mm]	[inch]	[mm]	[inch]	[mm]	[inch]	[mm]	[inch]	[mm]	[inch]
TEG7R6L.375x.25--	3/8" x 1/4"	57.2	2.250	57.2	2.250	9.53	3/8	6.35	1/4	0.89	.035	0.89	.035
TEG7R6L.5x.25--	1/2" x 1/4"	60.3	2.375	60.3	2.375	12.7	1/2	6.35	1/4	1.65	.065	0.89	.035
TEG7R6L.5x.375--	1/2" x 3/8"	60.3	2.375	60.3	2.375	12.7	1/2	9.53	3/8	1.65	.065	0.89	.035
TEG7R6L.75x.25--	3/4" x 1/4"	63.5	2.500	63.5	2.500	19.05	3/4	6.35	1/4	1.65	.065	0.89	.035
TEG7R6L.75x.375--	3/4" x 3/8"	63.5	2.500	63.5	2.500	19.05	3/4	9.53	3/8	1.65	.065	0.89	.035
TEG7R6L.75x.5--	3/4" x 1/2"	63.5	2.500	63.5	2.500	19.05	1.0	12.7	1/2	1.65	.065	1.65	.065
TEG7R6L1.0x.25--	1.0" x 1/4"	66.7	2.625	66.7	2.625	25.4	1.0	6.35	1/4	1.65	.065	0.89	.035
TEG7R6L1.0x.375--	1.0" x 3/8"	66.7	2.625	66.7	2.625	25.4	1.0	9.53	3/8	1.65	.065	0.89	.035
TEG7R6L1.0x.5--	1.0" x 1/2"	66.7	2.625	66.7	2.625	25.4	1.0	12.7	1/2	1.65	.065	1.65	.065
TEG7R6L1.0x.75--	1.0" x 3/4"	66.7	2.625	66.7	2.625	25.4	1.0	19.05	3/4	1.65	.065	1.65	.065
TEG7R6L1.5x.5--	1½" x 1/2"	73.0	2.875	73.0	2.875	38.1	1½	12.7	1/2	1.65	.065	1.65	.065
TEG7R6L1.5x.75--	1½" x 3/4"	73.0	2.875	73.0	2.875	38.1	1½	19.05	3/4	1.65	.065	1.65	.065
TEG7R6L1.5x1.0--	1½" x 1.0"	73.0	2.875	73.0	2.875	38.1	1½	25.4	1.0	1.65	.065	1.65	.065
TEG7R6L2.0x.5--	2.0" x 1/2"	85.7	3.375	79.4	3.125	50.8	2.0	12.7	1/2	1.65	.065	1.65	.065
TEG7R6L2.0x.75--	2.0" x 3/4"	85.7	3.375	79.4	3.125	50.8	2.0	19.05	3/4	1.65	.065	1.65	.065
TEG7R6L2.0x1.0--	2.0" x 1.0"	85.7	3.375	79.4	3.125	50.8	2.0	25.4	1.0	1.65	.065	1.65	.065
TEG7R6L2.0x1.5--	2.0" x 1½"	85.7	3.375	79.4	3.125	50.8	2.0	38.1	1½	1.65	.065	1.65	.065
TEG7R6L2.5x.5--	2½" x 1/2"	92.1	3.625	85.7	3.375	63.5	2½	12.7	1/2	1.65	.065	1.65	.065
TEG7R6L2.5x.75--	2½" x 3/4"	92.1	3.625	85.7	3.375	63.5	2½	19.05	3/4	1.65	.065	1.65	.065
TEG7R6L2.5x1.0--	2½" x 1.0"	92.1	3.625	85.7	3.375	63.5	2½	25.4	1.0	1.65	.065	1.65	.065
TEG7R6L2.5x1.5--	2½" x 1½"	92.1	3.625	85.7	3.375	63.5	2½	38.1	1½	1.65	.065	1.65	.065
TEG7R6L2.5x2.0--	2½" x 2.0"	92.1	3.625	85.7	3.375	63.5	2½	50.8	2.0	1.65	.065	1.65	.065
TEG7R6L3.0x.5--	3.0" x 1/2"	98.4	3.875	92.1	3.625	76.2	3.0	12.7	1/2	1.65	.065	1.65	.065
TEG7R6L3.0x.75--	3.0" x 3/4"	98.4	3.875	92.1	3.625	76.2	3.0	19.05	3/4	1.65	.065	1.65	.065
TEG7R6L3.0x1.0--	3.0" x 1.0"	98.4	3.875	92.1	3.625	76.2	3.0	25.4	1.0	1.65	.065	1.65	.065
TEG7R6L3.0x1.5--	3.0" x 1½"	98.4	3.875	92.1	3.625	76.2	3.0	38.1	1½	1.65	.065	1.65	.065
TEG7R6L3.0x2.0--	3.0" x 2.0"	98.4	3.875	92.1	3.625	76.2	3.0	50.8	2.0	1.65	.065	1.65	.065
TEG7R6L3.0x2.5--	3.0" x 2½"	98.4	3.875	92.1	3.625	76.2	3.0	63.5	2½	1.65	.065	1.65	.065
TEG7R6L4.0x.5--	4.0" x 1/2"	120.7	4.750	104.8	4.125	101.6	4.0	12.7	1/2	2.11	.083	1.65	.065
TEG7R6L4.0x.75--	4.0" x 3/4"	120.7	4.750	104.8	4.125	101.6	4.0	19.05	3/4	2.11	.083	1.65	.065
TEG7R6L4.0x1.0--	4.0" x 1.0"	120.7	4.750	104.8	4.125	101.6	4.0	25.4	1.0	2.11	.083	1.65	.065
TEG7R6L4.0x1.5--	4.0" x 1½"	120.7	4.750	104.8	4.125	101.6	4.0	38.1	1½	2.11	.083	1.65	.065
TEG7R6L4.0x2.0--	4.0" x 2.0"	120.7	4.750	111.1	4.375	101.6	4.0	50.8	2.0	2.11	.083	1.65	.065
TEG7R6L4.0x2.5--	4.0" x 2½"	120.7	4.750	111.1	4.375	101.6	4.0	63.5	2½	2.11	.083	1.65	.065
TEG7R6L4.0x3.0--	4.0" x 3.0"	120.7	4.750	111.1	4.375	101.6	4.0	76.2	3.0	2.11	.083	1.65	.065
TEG7R6L6.0x3.0--	6.0" x 3.0"	181.0	7.125	136.5	5.375	152.4	6.0	76.2	3.0	2.77	.109	1.65	.065
TEG7R6L6.0x4.0--	6.0" x 4.0"	181.0	7.125	146.1	5.750	152.4	6.0	101.6	4.0	2.77	.109	2.11	.083



		<b>EGMO LTD.</b> Tanks and stainless steel accessoriess P.O.B. 1111, 1 Hayotsrim St. 22110 Nahariya Israel Tel. 972-4-9855175 Fax: 972-4-9855173	
<b>Ordering Code:</b> TEG7R-REDUCING TEE	<b>Drawn</b>	<b>Guy.S</b>	<b>4/14/2015</b>
	<b>Approved</b>	<b>Alex.L</b>	<b>4/14/2015</b>
		<b>Material:</b>	AISI 316L
©2014 EGMO Ltd. All rights reserved. The information on this drawing may not be reproduced or republished without prior consent of EGMO Ltd		<b>Finish:</b>	ASME BPE-2012 (Per ordering)
		<b>Size - A4</b>	<b>Rev:</b> 0
		<b>Sheet 1</b>	<b>From 1</b>