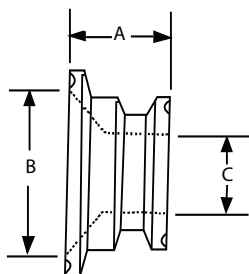


# Conical Instrument Reducers



- Machined one piece
- All reductions have 1.25 O.A.L.
- Material T316L Stainless Steel
- Material Certification Supplied
- Heat / Job Numbers etched on each fitting
- Standard finish (SF1) 20 Ra I.D.
- Also available - (SF4) 15 Ra electro polished

| Size          | A    | B     | C     | Ordering Code     |
|---------------|------|-------|-------|-------------------|
| 3/4 x 1/2     | 1.25 | 0.620 | 0.370 | TEG31I6L.75x.5 -  |
| 1 x 1/2       | 1.25 | 0.870 | 0.370 | TEG31I6L1.0x.5 -  |
| 1 x 3/4       | 1.25 | 0.870 | 0.620 | TEG31I6L1.0x.75 - |
| 1 1/2 x 1/2   | 1.25 | 1.370 | 0.370 | TEG31I6L1.5x .5 - |
| 1 1/2 x 3/4   | 1.25 | 1.370 | 0.620 | TEG31I6L1.5x.75 - |
| 1 1/2 x 1     | 1.25 | 1.370 | 0.870 | TEG31I6L1.5x1.0 - |
| 2 x 1/2       | 1.25 | 1.870 | 0.370 | TEG31I6L2.0x.5 -  |
| 2 x 3/4       | 1.25 | 1.870 | 0.620 | TEG31I6L2.0x.75 - |
| 2 x 1         | 1.25 | 1.870 | 0.870 | TEG31I6L2.0x1.0 - |
| 2 x 1 1/2     | 1.25 | 1.870 | 1.370 | TEG31I6L2.0x1.5 - |
| 2 1/2 x 1/2   | 1.25 | 2.370 | 0.370 | TEG31I6L2 .5x.5 - |
| 2 1/2 x 3/4   | 1.25 | 2.370 | 0.620 | TEG31I6L2.5x.75 - |
| 2 1/2 x 1     | 1.25 | 2.370 | 0.870 | TEG31I6L2.5x1.0 - |
| 2 1/2 x 1 1/2 | 1.25 | 2.370 | 1.370 | TEG31I6L2.5x1.5 - |
| 2 1/2 x 2     | 1.25 | 2.370 | 1.870 | TEG31I6L2.5x2.0 - |
| 3 x 1/2       | 1.25 | 2.870 | 0.370 | TEG31I6L3.0x.5 -  |
| 3 x 3/4       | 1.25 | 2.870 | 0.620 | TEG31I6L3.0x.75 - |
| 3 x 1         | 1.25 | 2.870 | 0.870 | TEG31I6L3.0x1.0 - |
| 3 x 1 1/2     | 1.25 | 2.870 | 1.370 | TEG31I6L3.0x1.5 - |
| 3 x 2         | 1.25 | 2.870 | 1.870 | TEG31I6L3.0x2.0 - |
| 3 x 2 1/2     | 1.25 | 2.870 | 2.370 | TEG31I6L3.0x2.5 - |
| 4 x 1/2       | 1.25 | 3.834 | 0.370 | TEG31I6L4.0x.5 -  |
| 4 x 3/4       | 1.25 | 3.834 | 0.620 | TEG31I6L4.0x.75 - |
| 4 x 1         | 1.25 | 3.834 | 0.870 | TEG31I6L4.0x1.0 - |
| 4 x 1 1/2     | 1.25 | 3.834 | 1.370 | TEG31I6L4.0x1.5 - |
| 4 x 2         | 1.25 | 3.834 | 1.870 | TEG31I6L4.0x2.0 - |
| 4 x 2 1/2     | 1.25 | 3.834 | 2.370 | TEG31I6L4.0x2.5 - |
| 4 x 3         | 1.25 | 3.834 | 2.870 | TEG31I6L4.0x3.0 - |