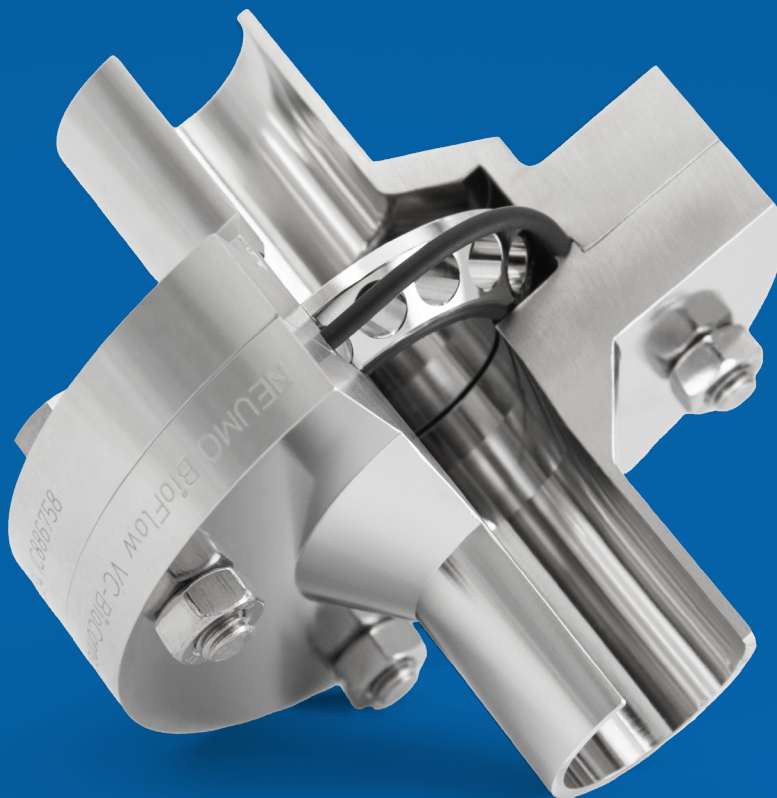


ASEPTIC AND HIGH PURITY TECHNOLOGY

In Flow. Globally. Together.



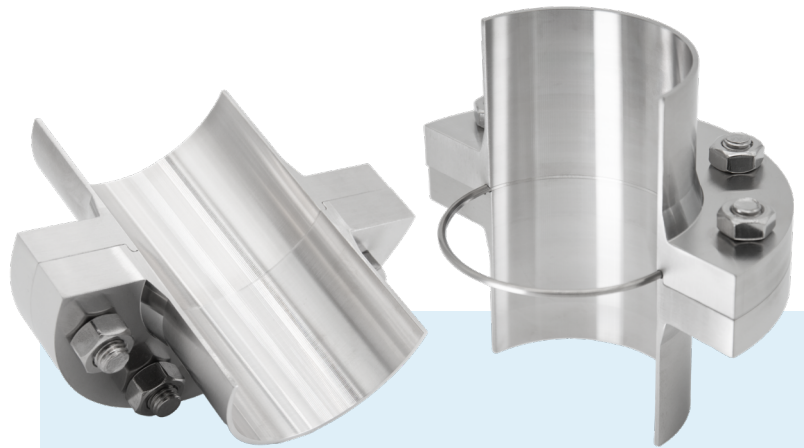
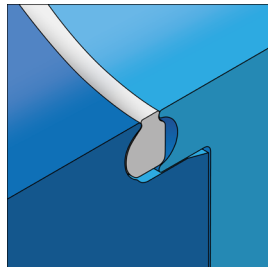
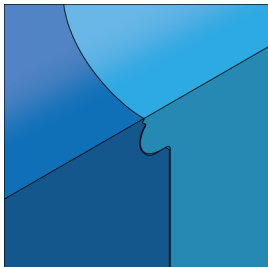
CONNECTS®
CLEANLIP®
BIOFLOW®
CLEANCLIP
SAMPLING VALVE
SPECIAL ALLOYS
MAXPURE®



ConnectS[®] and CleanLip[®]



- NEUMO – ConnectS[®] & CleanLip[®]
- elastomer-free sealing technology (metal to metal)
 - CleanLip[®] = 316L /1.4435 gasket
 - ConnectS[®] = no additional gasket
- 316L /1.4435 standard [special alloys available]
- surface: Ra < 0,8µm standard [higher and e-polished available]
- dead space free unique NEUMO design
- wide range of dimensions in ASME-BPE, ISO, DIN
- perfect solution to avoid PFAS problems and improve process safety



PFAS-ban

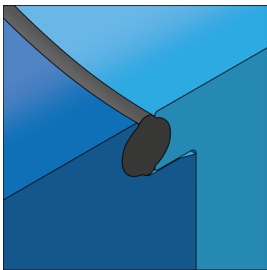
Read more about PFAS
in our Whitepaper

BioFlow®



CLICK OR
SCAN

- self-acting cGMP Check Valves for enhanced manufacturing processes
- protecting your valuable pumps and instruments from damage
- working with unique shut-off element FLOW STOP (no spring)
- housing with Tri-Clamp, ConnectS or BioConnect sealing design
- vertical and horizontal models
- avoiding contamination, no fouling, optimal cleanability & low differential pressure

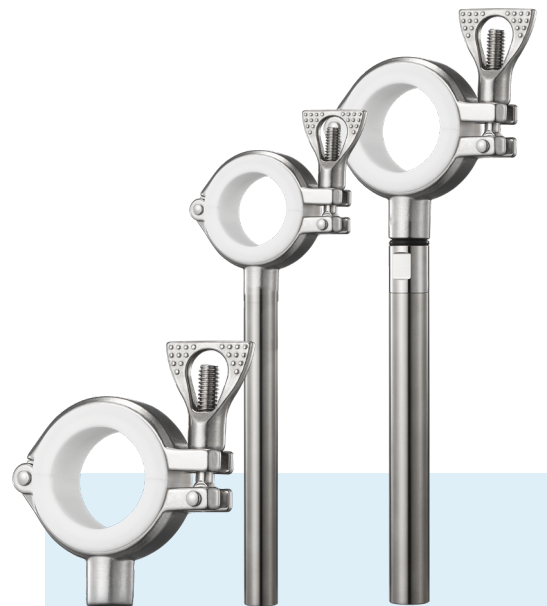


CleanClip



CLICK OR
SCAN

- adaptive Pipe Hangers for hygienic applications such as clean rooms
- designed to adapt flexibility to the angle of the pipe installation
- type NP without shaft
- type NPM for 4° tilt and 360° rotation
- type NPF for static installation
- wide range of dimensions for ASME BPE, ISO and DIN

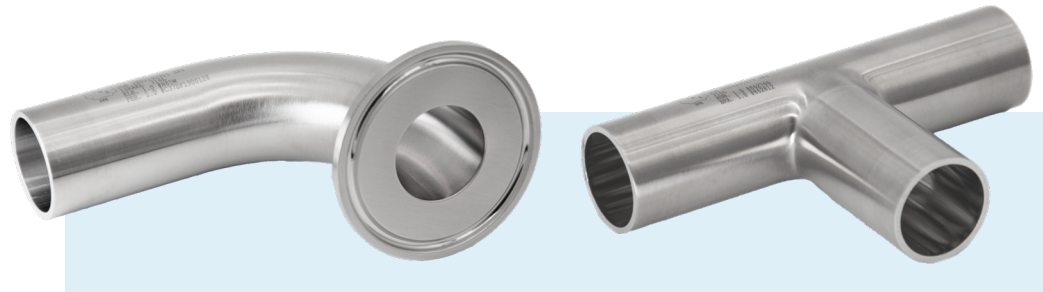


MaxPure®



CLICK OR
SCAN

- EGMO manufacturing facility in Israel carries ASME BPE certification of authorization
- raw material for tubular fittings are manufactured in the USA by ASME BPE certificate holders
- best in the industry MTR's, easy retrievable online or with QR code on each bag
- multi step cleaning and passivation process on every fitting, meeting CGA G-4.1:2018
- guaranteed RA - every fitting is quality inspected



MaxPure® Sampling Valve



CLICK OR
SCAN

- crossover solution for both pharma and food - BPE and 3A compliant
- suitable for various media types and viscosity
- reduces the risk of cross contamination



Special Alloys



CLICK OR
SCAN

- we provide superior corrosion resistance for the most aggressive applications in hygienic and high purity industries
- supplying your project from tubes, fittings, valves, vessels, pumps, heat exchangers up to customized solutions in 904L (1.4539) / 6MO (UNS N08367/1.4529) / Superduplex (UNS S32750/1.4410) / Alloy 22 (2.4602) / Alloy 59 (2.4605) + Titanium Gr. 2
- surface standards according ASME-BPE
- huge dimension range in ASME-BPE and ISO



Specialty Fabrications



CLICK OR
SCAN

- specialty process components per your design, precision manifolds, transition adapters, dip tubes, spargers, and spools
- the same best in industry MTR's as our MaxPure fittings - weld map and weld log also available
- surface standards according to BPE - in house electropolishing
- cnc machining, extruding and pulling branch ports, orbital welding, laser tube cutting

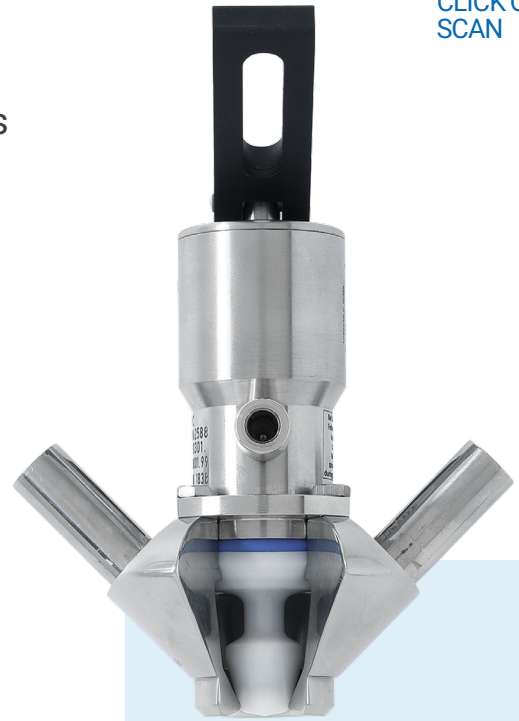


BioCheck



CLICK OR
SCAN

- allows easy and safe **sampling of liquids** from closed systems such as vessels and pipe lines in aseptic as well as non-aseptic applications
- compact design providing integration into aseptic and hygienic production lines.
- only one-piece sealing (PTFE bellow) in contact with product
- dead space free design - can be easily cleaned and sterilized via CIP/SIP



The NEUMO Ehrenberg Group is one of the world's largest privately-owned manufacturers and distributors of stainless steel products and metal cutting tools. Founded in Germany in 1947 by the late Senator Henry Ehrenberg, today it is a diverse, multi-national organization with an impressive track record based on the extensive knowledge and experience accumulated by the Group's companies - NEUMO, VNE, EGMO and RIEGER - in three core areas: stainless steel flow technologies, tooling and stainless steel trading.

vnestainless.com
neumo.de
egmo.co.il
rr-rieger.de

