

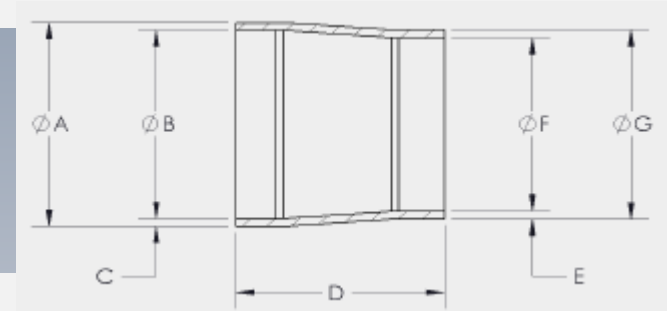
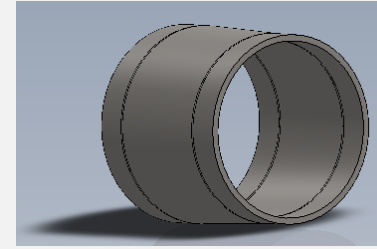
# Product News and Updates

For customers that want to get away from Din metric or ISO tube sizes we now offer transition pieces that adapt to standard inch tube sizes.

How many times have you seen an emergency shutdown at a production plant and you have to wait for metric components to come in from overseas?

The easiest alternative is to transition to inch size tube and utilize readily available US sourced tube components for all future maintenance shutdowns.

Want to specify in a inch tube sized valve or pump in a facility that uses metric? Now you can with this easy to use transition piece. Special adapters can be made with Din ferrule by clamp ferrule connections.



E17WW6LDN (SIZE) X (SIZE)							
DIN 11866 / 11850 SERIES							
SIZE	A	B	C	D	E	F	G
DN 4 X .25	0.250	0.180	0.035	1.000	1 MM	4 MM	6 MM
DN 6 X .375	0.375	0.305	0.035	1.000	1 MM	6 MM	8 MM
DN 8 X .375	10 MM	8 MM	1 MM	1.000	0.035	0.305	0.375
DN 10 X .5	13MM	10 MM	1.5 MM	1.000	0.065	0.370	0.500
DN 15 X .75	0.750	0.620	0.065	1.500	1.5 MM	16 MM	19 MM
DN 20 X 1.0	1.000	0.870	0.065	1.500	1.5 MM	20 MM	23 MM
DN 25 X 1.0	29 MM	26 MM	1.5 MM	1.500	0.065	0.870	1.000
DN 32 X 1.5	1.500	1.370	0.065	1.500	1.5 MM	32 MM	35 MM
DN 40 X 1.5	41 MM	38 MM	1.5 MM	2.000	0.065	1.370	1.500
DN 50 X 2.0	53 MM	50 MM	1.5 MM	2.000	0.065	1.870	2.000
DN 65 X 2.5	70 MM	66 MM	2 MM	2.000	0.065	2.370	2.500
DN 80 X 3.0	85 MM	81 MM	2 MM	2.000	0.065	2.870	3.000
DN 100 X 4.0	104 MM	100 MM	2 MM	2.000	0.083	3.834	4.000